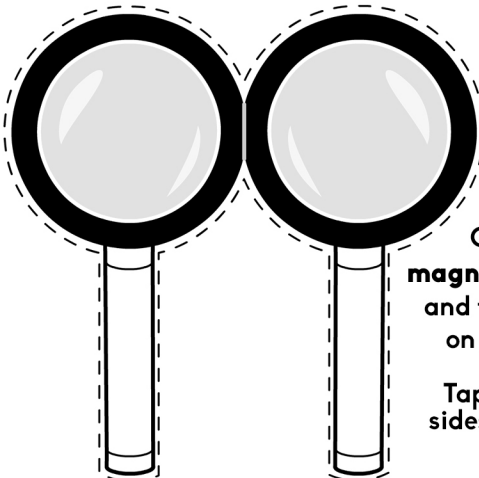


DETECTIVE READATRON-15

CAP, MAGNIFYING GLASS AND CAPE

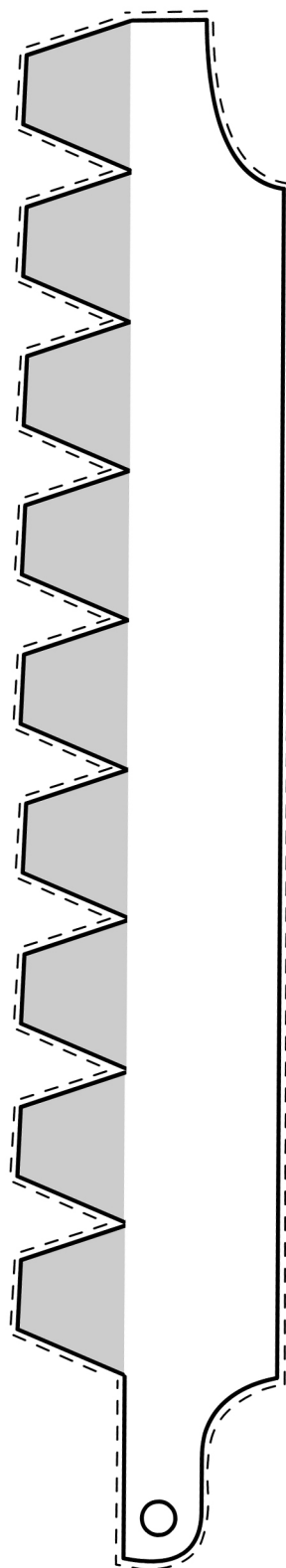
MAGNIFYING GLASS



Cut out
magnifying glass
and fold in half
on gray line.

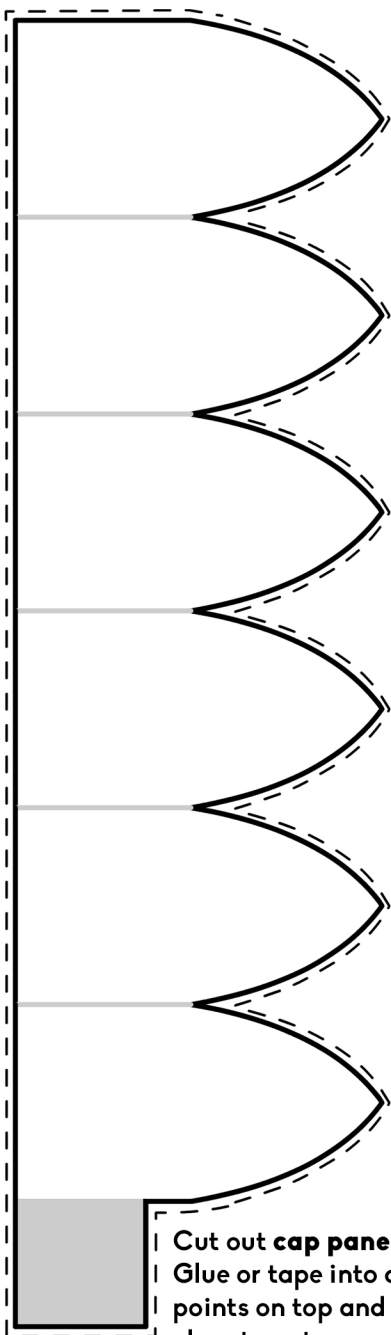
Tape or glue
sides together.

CAPE COLLAR



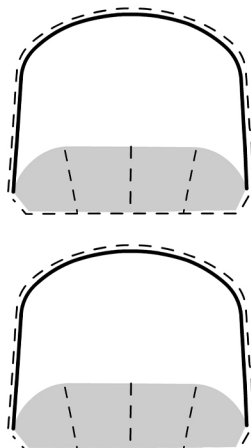
Cut out **cape collar**,
Fold up gray areas then
glue or tape under top
edge of cape (dotted lines).

CAP PANELS



Cut out **cap panels** and fold on gray line.
Glue or tape into a circle. Match up the
points on top and add a small piece of
clear tape to secure.

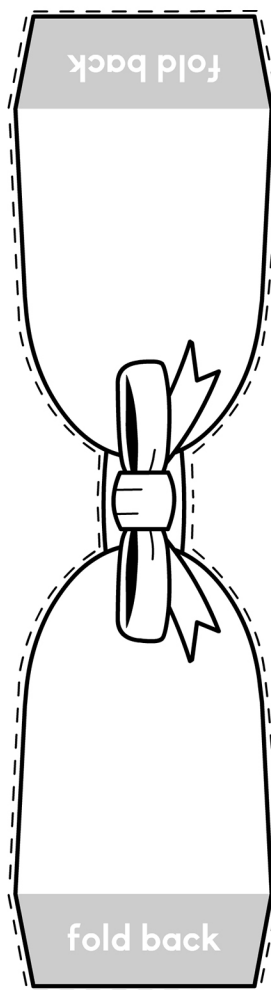
CAP BILLS



Cut out **cap bills** and
fold up gray area.

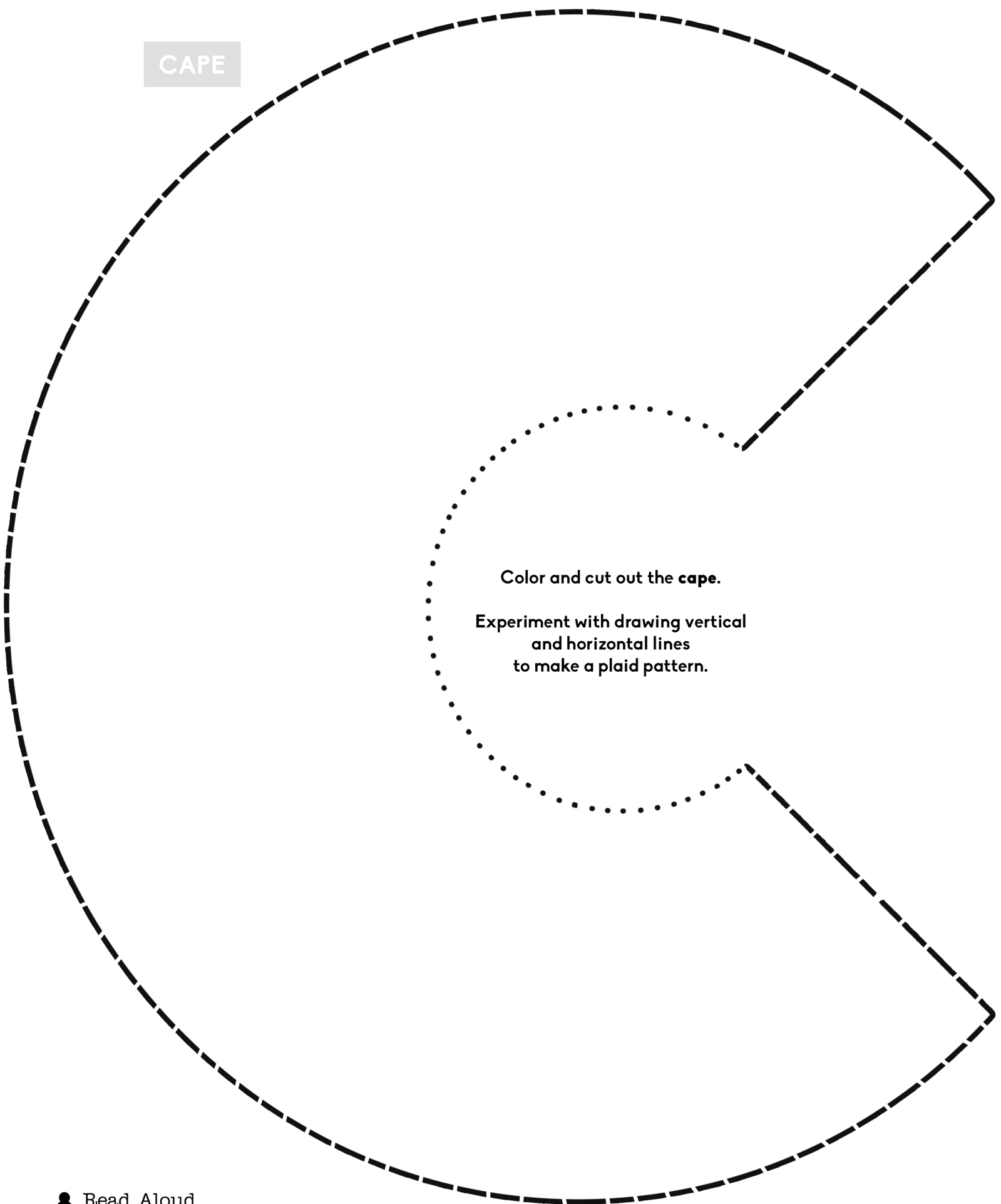
After assembling the
cap panels, glue one
bill to the front and
one to the back of
the cap.

CAP EARFLAPS



Cut out **cap earflaps**,
Fold back gray areas and
tuck under sides of cap panels.
Glue or tape in place.

CAPE



Color and cut out the **cape**.
Experiment with drawing vertical
and horizontal lines
to make a plaid pattern.