

Identifying Cereal Sugar Limits



Here are three ways to determine if a breakfast cereal is within the CACFP sugar limit. As long as a breakfast cereal meets the sugar limit using **AT LEAST ONE OF THESE METHODS** described below, it is considered within the sugar limit.



1 WIC

Women • Infants • Children

Use your State agency's Special Supplemental Nutrition Program for Women, Infants, and Children (WIC) approved breakfast cereal list.

Product Example: Dora the Explorer



* confirm with your states WIC approved cereal list.

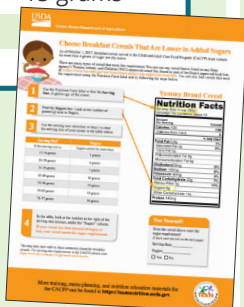
2

Use USDA's Team Nutrition training worksheet "Choose Breakfast Cereals That Are Low in Added Sugar."

The worksheet includes a chart with common breakfast cereal serving sizes and the maximum amount of sugar the breakfast cereal may contain per serving.

ALLOWABLE SUGAR LIMITS

SERVING SIZE	SUGARS
If the serving size is:	cannot be more than:
8-11 grams	2 grams
12-16 grams	3 grams
17-21 grams	4 grams
22-25 grams	5 grams
26-30 grams	6 grams
31-35 grams	7 grams
36-40 grams	8 grams
41-44 grams	9 grams
45-49 grams	10 grams
50-54 grams	11 grams
55-58 grams	12 grams
59-63 grams	13 grams
64-68 grams	14 grams
69-73 grams	15 grams
74-77 grams	
78-82 grams	

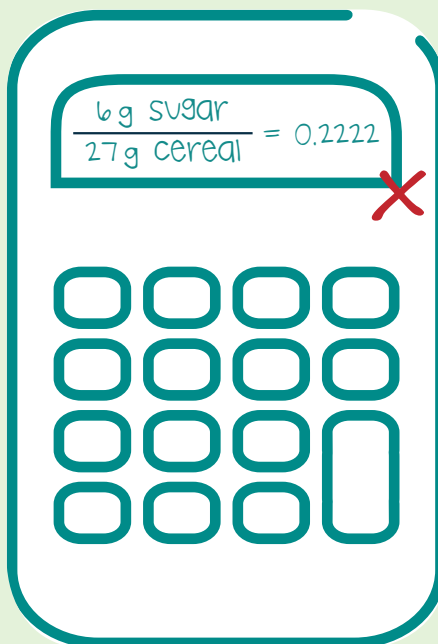


3

Use the Nutrition Facts label on the breakfast cereal packaging to calculate the sugar content per dry ounce.

- 1) Find the serving size in grams at the top of the label and the sugars listed towards the middle.
- 2) Divide the total sugars by the serving size in grams.

If the answer is equal to or less than 0.212, then the cereal is within the required sugar limit and may be creditable in CACFP.



GRAMS OF SUGAR PER SERVING if... ≤ 0.212
GRAMS OF CEREAL PER SERVING it is creditable

Amount Per Serving **Dora the Explorer**

Calories 100

Total Carbohydrate 23g **8%**

Dietary Fiber 3g **11%**

Sugars 6g

Other Carbohydrate 14g

Protein 1g

Ingredients: Whole Grain Corn, Corn Meal, Sugar, Corn Bran, Corn Syrup, Canola Oil, Salt, Cinnamon, Baking Soda, Vitamin E (mixed tocopherols) Added to Preserve Freshness.

Vitamins and Minerals: Calcium Carbonate, Iron and Zinc (mineral nutrients), Vitamin C (sodium ascorbate), A B Vitamin (niacinamide), Vitamin B₆ (pyridoxine hydrochloride), Vitamin B₂ (riboflavin), Vitamin B₁ (thiamin mononitrate), Vitamin A (palmitate), A B Vitamin (folic acid), Vitamin B₁₂, Vitamin D₃.

DISTRIBUTED BY GENERAL MILLS SALES, INC., MINNEAPOLIS, MN 55440 USA
 Produced with Genetic Engineering
 Learn more at Ask.GeneralMills.com

We serve the world by Making Food People Love We welcome your questions and comments generalmills.com 1.800.328.1144

© General Mills Patent: generalmills.com/pat
 Exchange: 1% Starbuck
 Based on Academy of Nutrition and Dietetics and American Diabetes Association criteria
 This package is sold by weight, not by volume. You can be assured of proper weight even though some settling of contents normally occurs during shipment and handling.
 F 3215606105 S93 3484952105



(https://www.fns.usda.gov/tv/cacfp-meal-pattern-training-tools)

Product Example: Dora the Explorer meets one of the three methods, therefore, this product is CACFP creditable.

Disclosure: This list is for informational purposes and does not imply endorsement by NCA or the USDA. The amount of sugar in a cereal might change. Even if you always buy the same brands and types of cereal, be sure to check the serving size and amount of sugars on the Nutrition Facts label to make sure they match what you have written in the list above. All cereals served must be whole grain-rich, enriched or fortified.

This institution is an equal opportunity provider.



Choose Breakfast Cereals That Are Lower in Added Sugars

As of October 1, 2017, breakfast cereal served in the Child and Adult Care Food Program (CACFP) must contain no more than 6 grams of sugar per dry ounce.

There are many types of cereal that meet this requirement. You can use any cereal that is listed on any State agency's Women, Infants, and Children (WIC)-approved cereal list, found as part of the State's approved food lists at: <https://www.fns.usda.gov/wic/links-state-agency-wic-approved-food-lists>. You can also find cereals that meet the requirement using the Nutrition Facts label and by following the steps below:



1 Use the Nutrition Facts label to find the **Serving Size**, in grams (g), of the cereal.

2 Find the **Sugars** line. Look at the number of grams (g) next to Sugars.

3 Use the serving size identified in Step 1 to find the serving size of your cereal in the table below.

Serving Size*	Sugars
If the serving size is:	Sugars cannot be more than:
12-16 grams	3 grams
26-30 grams	6 grams
31-35 grams	7 grams
45-49 grams	10 grams
55-58 grams	12 grams
59-63 grams	13 grams
74-77 grams	16 grams

4 In the table, look at the number to the right of the serving size amount, under the "Sugars" column.
If your cereal has that amount of sugar, or less, your cereal meets the sugar requirement.

*Serving sizes here refer to those commonly found for breakfast cereals. For serving size requirements in the CACFP, please visit <https://www.fns.usda.gov/cacfp/meals-and-snacks>.

Yummy Brand Cereal

Nutrition Facts

Serving Size $\frac{3}{4}$ cup (30g)	
Servings Per Container about 15	
Amount Per Serving	Cereal
Calories 100	100
Calories from Fat 5	5
% Daily Value*	
Total Fat 0.5g	1%
Saturated Fat 0g	0%
Trans Fat 0g	
Polyunsaturated Fat 0g	
Monounsaturated Fat 0g	
Cholesterol 0mg	0%
Sodium 140mg	6%
Potassium 90mg	3%
Total Carbohydrate 22g	7%
Dietary Fiber 3g	11%
Sugars 5g	
Other Carbohydrate 14g	
Protein 140mg	

Test Yourself:

Does the cereal above meet the sugar requirement?
(Check your answer on the next page)

Serving Size: _____

Sugars: _____

Yes No



Try It Out!



Use the “Sugar Limits in Cereal” table below to help find cereals you can serve at your site. Write down your favorite brands and other information in the “Cereals To Serve in the CACFP” list. You can use this as a shopping list when buying cereals to serve in your program.

Sugar Limits in Cereal

Serving Size	Sugars	Serving Size	Sugars
If the serving size is:	Sugars cannot be more than:	If the serving size is:	Sugars cannot be more than:
0-2 grams	0 grams	50-54 grams	11 grams
3-7 grams	1 gram	55-58 grams	12 grams
8-11 grams	2 grams	59-63 grams	13 grams
12-16 grams	3 grams	64-68 grams	14 grams
17-21 grams	4 grams	69-73 grams	15 grams
22-25 grams	5 grams	74-77 grams	16 grams
26-30 grams	6 grams	78-82 grams	17 grams
31-35 grams	7 grams	83-87 grams	18 grams
36-40 grams	8 grams	88-91 grams	19 grams
41-44 grams	9 grams	92-96 grams	20 grams
45-49 grams	10 grams	97-100 grams	21 grams

Cereals To Serve in the CACFP*

Cereal Brand	Cereal Name	Serving Size	Sugars (g)
Healthy Food Company	Nutty Oats	28 grams	5 grams

*The amount of sugar in a cereal might change. Even if you always buy the same brands and types of cereal, be sure to check the serving size and amount of sugars on the Nutrition Facts label to make sure they match what you have written in the list above. All cereals served must be whole grain-rich, enriched or fortified.

Answer to “Test Yourself” activity on page 1: *The cereal has 5 grams of sugar per 30 grams. The maximum amount of sugar allowed for 30 grams of cereal is 6 grams. 5 is less than 6, so this cereal meets the sugar requirement.*

Elija cereales para el desayuno bajos en azúcares añadidas

A partir del 1 de octubre de 2017, los cereales servidos para el desayuno en el Programa de Alimentos para el Cuidado de Alimentos de Niños y Adultos (CACFP) deben contener como máximo 6 gramos de azúcar por onza seca.

Hay muchos tipos de cereales que cumplen este requisito. Puede utilizar cualquier cereal que esté en la lista de cereales aprobados por cualquier agencia estatal de Women, Infants, and Children (WIC), y que forman parte de las listas estatales de alimentos aprobados en: <http://www.fns.usda.gov/wic/>. También puede encontrar cereales que cumplan el requisito utilizando la etiqueta de información nutricional y siguiendo los pasos a continuación:



1

Utilice la etiqueta de información nutricional para encontrar el **tamaño de la porción** (Serving Size), en gramos (g), del cereal.

2

Busque la línea de **azúcares** (Sugars). Mire el número de gramos (g) al lado de azúcares.

3

Utilice el tamaño de la porción identificada en el paso 1 para encontrar el tamaño de la porción de su cereal en la tabla que se encuentra a continuación.

Tamaño de la porción*	Azúcares
Si el tamaño de la porción es:	Los azúcares no deben ser más de:
12-16 gramos	3 gramos
26-30 gramos	6 gramos
31-35 gramos	7 gramos
45-49 gramos	10 gramos
55-58 gramos	12 gramos
59-63 gramos	13 gramos
74-77 gramos	16 gramos

4

En la tabla, mire el número a la derecha del tamaño de la porción, bajo la columna "Azúcares".

Si su cereal tien esa cantidad de azúcar, o menos, su cereal cumple con el requisito de azúcar.

*Los tamaños de la porción aquí se refieren a los usados normalmente para los cereales del desayuno. Para los requisitos de tamaño de la porción en el CACFP, visite <https://www.fns.usda.gov/cacfp/meals-and-snacks>.

Yummy Cereal

Nutrition Facts	
Serving Size $\frac{3}{4}$ cup (30g)	
Servings Per Container about 15	
Amount Per Serving	Cereal
Calories 100	100
Calories from Fat 5	5
% Daily Value*	
Total Fat 0.5g	1%
Saturated Fat 0g	0%
Trans Fat 0g	
Polyunsaturated Fat 0g	
Monounsaturated Fat 0g	
Cholesterol 0mg	0%
Sodium 140mg	6%
Potassium 90mg	3%
Total Carbohydrate 22g	7%
Dietary Fiber 3g	11%
Sugars 5g	
Other Carbohydrate 14g	
Protein 140mg	

Póngase a prueba:

¿El cereal de arriba cumple con el requisito de azúcar?
(Compruebe su respuesta en la página siguiente)

Tamaño de la porción: _____

Azúcares: _____

Sí No

¡Pruébalo!



Utilice la tabla “Límites de azúcar en el cereal” que verá a continuación para ayudarle a encontrar los cereales que puede servir en su centro. Anote sus marcas favoritas y demás información en la lista “Cereales para servir en el CACFP”. Puede utilizar esto como una lista de compras al comprar cereales para servir en su programa.



Límites de azúcar en el cereal

Tamaño de la porción	Azúcares	Tamaño de la porción	Azúcares
Si el tamaño de la porción es:	Los azúcares no deben ser más de:	Si el tamaño de la porción es:	Los azúcares no deben ser más de:
0-2 gramos	0 gramos	50-54 gramos	11 gramos
3-7 gramos	1 gramo	55-58 gramos	12 gramos
8-11 gramos	2 gramos	59-63 gramos	13 gramos
12-16 gramos	3 gramos	64-68 gramos	14 gramos
17-21 gramos	4 gramos	69-73 gramos	15 gramos
22-25 gramos	5 gramos	74-77 gramos	16 gramos
26-30 gramos	6 gramos	78-82 gramos	17 gramos
31-35 gramos	7 gramos	83-87 gramos	18 gramos
36-40 gramos	8 gramos	88-91 gramos	19 gramos
41-44 gramos	9 gramos	92-96 gramos	20 gramos
45-49 gramos	10 gramos	97-100 gramos	21 gramos

Cereales para servir en el CACFP*

Marca de cereales	Nombre de los cereales	Tamaño de porción	Azúcares (g)
Healthy Food Company	Nutty Oats	28 gramos	5 gramos

*La cantidad de azúcar en un cereal puede cambiar. Incluso si usted siempre compra las mismas marcas y tipos de cereales, asegúrese de verificar el tamaño de la porción y la cantidad de azúcares en la etiqueta de información nutricional para asegurarse de que coincidan con lo que ha escrito en la lista anterior. Todos los cereales servidos deben ser ricos en granos integrales, enriquecidos o fortificados.

Respuesta a “Póngase a prueba” en la página 1: Los cereales contienen 5 gramos de azúcar por cada 30 gramos. La cantidad máxima de azúcar permitida para 30 gramos de cereales es de 6 gramos. 5 es menos que 6, por lo que este cereal cumple con el requisito del azúcar.